

GETTING AROUND

VEYLA

NATAI RESIDENCES

AT YOUR OWN TIME, YOUR OWN PACE.



MU KO SURIN
NATIONAL PARK

KOH RA

KOH PHRA THONG

ANDAMAN SEA



BAAN NAM KEM PIER

• KHAO LAK-LAM RU
NATIONAL PARK



THAP LAMU PIER

• KATATHONG GOLF COURSE

KHAO NA YAK •

• SA NANG MANORA



SIMILAN ISLANDS
NATIONAL PARK

PHANG - NGA

• THAP LAMU NAVY GOLF CLUB

• PHUNG CHANG CAVE

KHAO LAMPI - HAT THAI
MUEANG NATIONAL PARK •

• LAMPI WATERFALL

• SUWANNAKUHA TEMPLE

• THAI MUEANG BEACH GOLF CLUB

VEYLA
NATAI RESIDENCES
30 MINS FROM AIRPORT



• BABA BEACH CLUB

• WAT KHAO
WATERFALL

• KOH PANYEE

• AO PHAGN-NGA NATIONAL PARK

• SAMET NANG SHE
VIEWPOINT

• PHANG NGA BAY

SARASIN BRIDGE

TURTLE VILLAGE •

• YACHT HAVEN MARINA

PHUKET
INTERNATIONAL
AIRPORT



BLUE CANYON •
COUNTRY CLUB

• MISSION HILLS GOLF CLUB

• AO PO GRAND
MATINA

KOH YAO NOI

LAGUNA PHUKET •
GOLF CLUB

PHUKET

KOH YAO YAI

• BOAT LAGOON

RED MOUNTAIN •

PHUKET COUNTRY CLUB •

JUNGCEYLON •

• SRI PANWA PHUKET

PHI PHI
ISLANDS

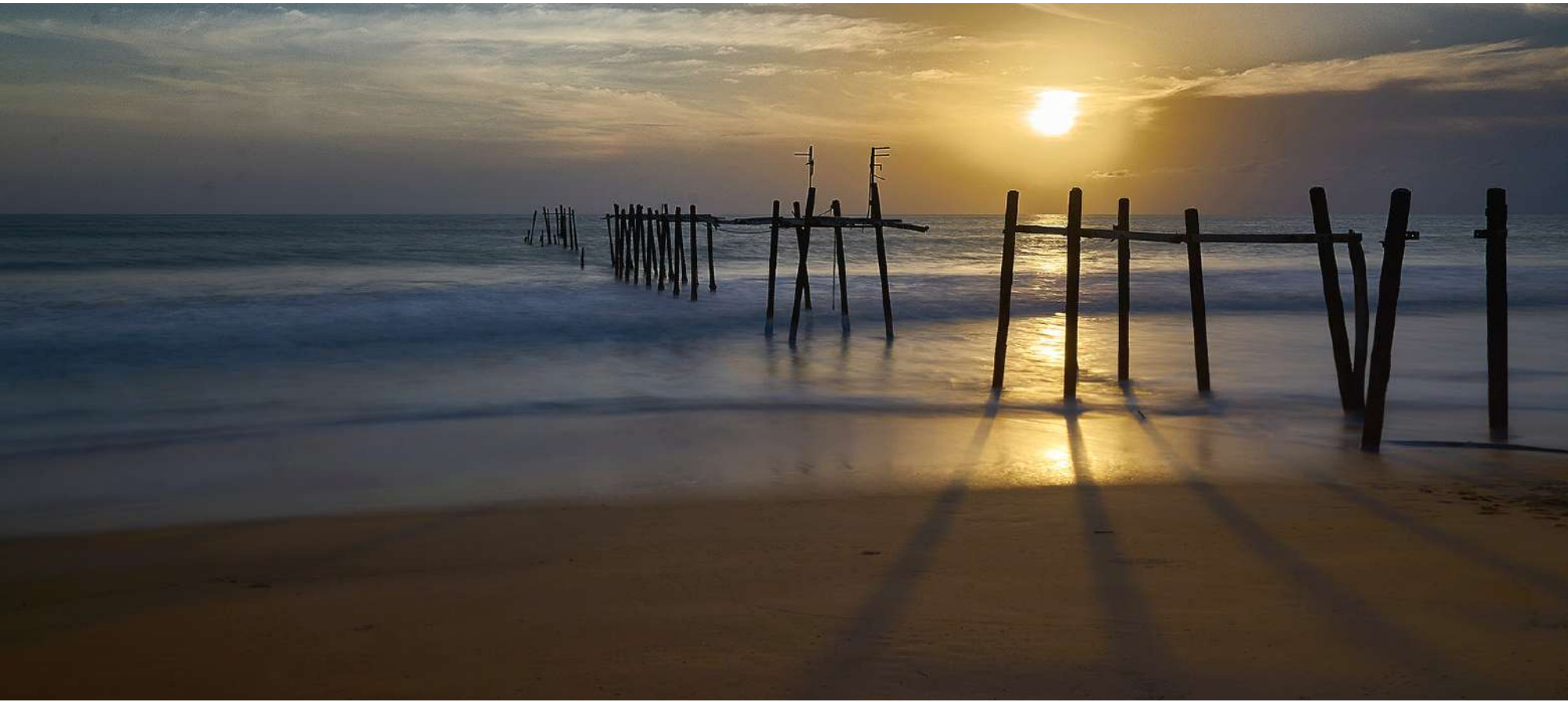
N



TIME, WELL SPENT WITH 6 ACTIVITIES YOU LIKE



VIEWPOINT & SIGHTSEEING



PILAI BRIDGE

จุดชมวิวสะพานไม้เขาปีหลาย

Just minutes away from Veyla Natai Residences, the historic Pilai wooden bridge is situated on Khao Pilai beach. This tranquil and quiet viewpoint delivers breathtaking ocean views with a sunset session you will never forget.

Opening hours: 24 hours.

Distance from Veyla Natai: 2 minutes by car.



WAT KHAO WATERFALL

น้ำตกวัดเขา

This small waterfall can be hard to find but is definitely worth a visit. Wat Khao waterfall is perfect for a day of tranquility while staying away from the crowd.

Opening hours: 24 hours.

Distance from Veyla Natai: 20 minutes by car.

TON PRAI WATERFALL

น้ำตกโตนไพร

Tucked away in the jungle, Ton Prai waterfall is about 40 minutes south of Khao Lak with a 700-meter jungle trek before you reach your destination. One of the more unknown waterfalls in southern Thailand, you can revel in the peace and quiet while having the waterfall almost all to yourselves.

Opening hours: 24 hours.

Distance from Veyla Natai:
20 minutes by car.

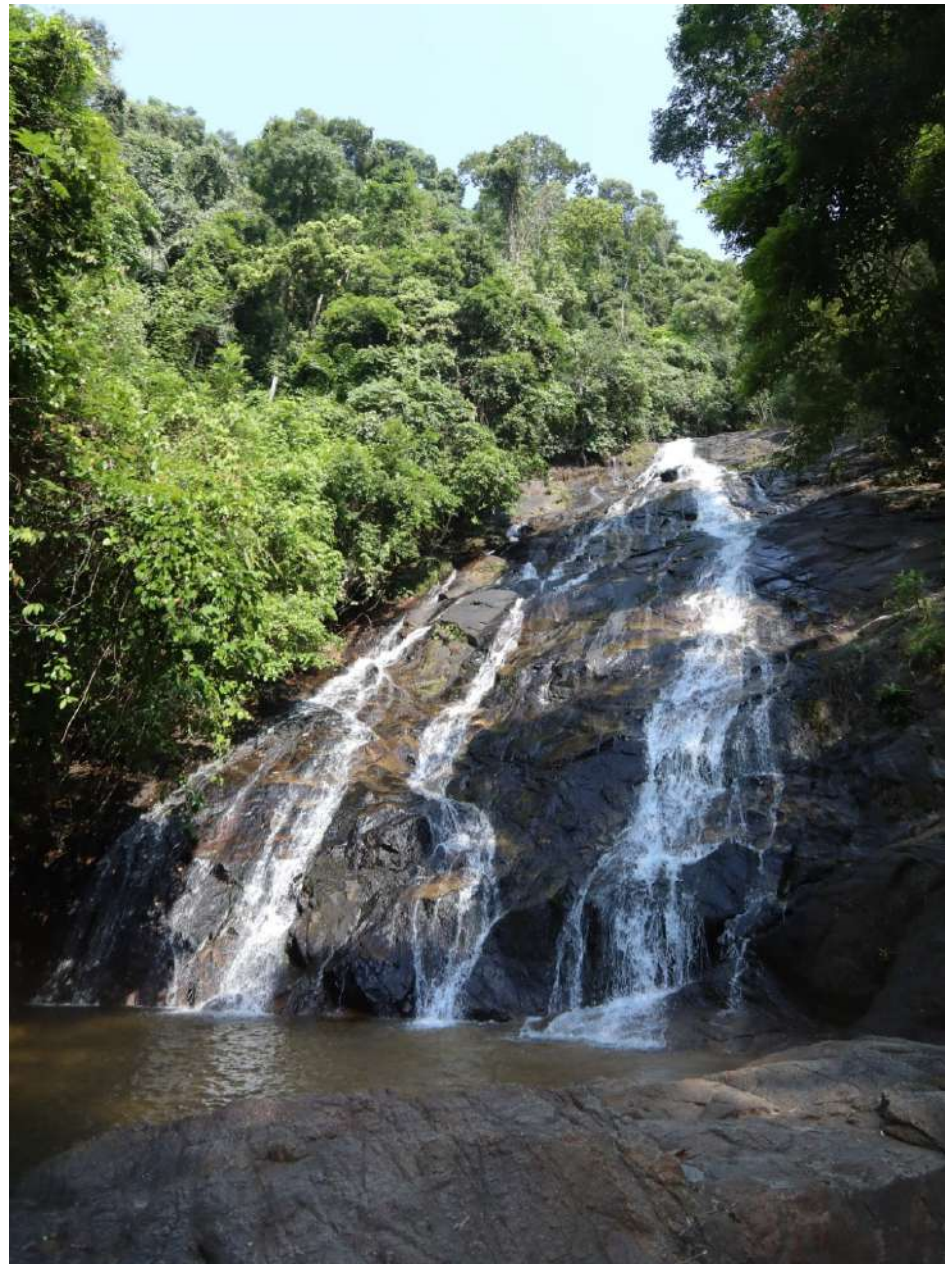


Photo by unsplash.com/@abhishekrevis

SAMET NANG SHE VIEWPOINT

จุดชมวิวนางชี

If you want great views over the Phang Nga Bay, we strongly advise you to go to SAMET NANG SHE viewpoint! The most popular times to go are sunrise and sunset.

Opening hours: 4 am. - 12 pm.

Distance from Veyla Natai: 30 minutes by car.



PHUNG CHANG CAVE

ถ้ำพุงช้าง

For those who love adventures, Phung Chang Cave is a must-visit destination to check out. The cave is famous for its mesmerizing beauty of nature's creation: exotic formations and surrealistic colors of limestone. The cave is about 600 meters long and takes around one and half hours for the tour by canoeing and rafting.

Opening hours: 8.30 am. - 5 pm.

Distance from Veyla Natai:

40 minutes by car.



KHAO KHAI NUI

จุดชมวิวกเขาไช่ภู่ຍ

Overlooking the Andaman Sea with mist swirling around the limestone cliffs and mountain tops, the Khao Khai Nui Viewpoint is unforgettable. Transportation up the mountain as well as on-site accommodation and camping facilities are all operated and run by the local Khai Nui community.

Opening hours: 24 hours.

Distance from Veyla Natai: 47 minutes by car.



RAMAN WATERFALL

วนอุทยานน้ำตกรามัญ

Namtok Raman Forest Park is located in Tambon Krasom within the area of the Khao Ton Din National Forest Reserve. The waterfall was named “Namtok Raman” after the fact that a number of Mon or Raman people fled the Burmese troops to settle on its topmost level during the so-called ‘Nine-army Battle’. The touristic area of the Forest Park features a medium-sized stream running from the watershed down to the valley. Various tiers of the waterfall result from the different elevations of the area that the stream flows by.

Opening hours: 9.00 am. - 4.30 pm.

Distance from Veyla Natai: 45 minutes by car.



SA NANG MANORA

สระนางมโนราห์

Sa Nang Manora is a waterfall with tiers of small ponds. Because of its beauty, Sa Nang Manora mirrors Sa Anodard, the bathing place of the mythical princess Manora Kinnaree in Thai folklore. The waterfall can be visited all year long and is a perfect place for dipping yourself in especially in the hot summer.

Opening hours: 8.30 am. - 4.30 pm.

Distance from Veyla Natai:

50 minutes by car.

BEACH & ISLAND



THAI MUEANG BEACH

หาดท้ายเหมือง

A quiet and tranquil beach about 10 kilometers long, Thai Mueang beach is perfect for those days when you want to escape the crowd. With a small stretch of street food restaurants across the road, this beach is perfect for a beach getaway.

Opening hours: 8 am. - 4 pm.

Distance from Veyla Natai: 30 minutes by car.



KHAO NA YAK

เขาน้ำยัก

The Unseen Paradise. Hidden at the back of a mountain, Khao Na Yak can be reached only by a four-wheel car offered by Thai Mueang National Park. When arrive, please feel free to let yourself venturing into the colorful marine world, spending an exciting half-day swimming and snorkeling in crystal clear blue water and relaxing on a deserted white sandy beach.

Opening hours: 8 am. - 5 pm.

Distance from Veyla Natai: 30 minutes by car to Thai Mueang National Park.



PHANG NGA BAY

อ่าวพังงา

Phang Nga Bay is famous for its spectacular sceneries of limestone cliffs, small islands and dazzling green water. The highlight of Phang Nga Bay is 'Koh Tapu' or 'James Bond Island', a small islet of which its shape resembles a nail that was featured in the 1974 film 'The Man with the Golden Gun'.

Opening hours: 9 am. - 5 pm.

Distance from Veyla Natai: 30 minutes by car to Surakul Pier and 20 minutes by long-tail boat to Phang Nga Bay.



KHAO LAK-LAM RU NATIONAL PARK

อุทยานแห่งชาติเขาลำรุ

The Park actually extends into four different Amphoe (districts) within Phang Nga Province. There are also a number of waterfalls. The Park is ideal for hiking, forest walks and viewing wildlife.

Opening hours: 9 am. - 6 pm.

Distance from Veyla Natai: 46 minutes by car.

KOH YAO NOI & KOH YAO YAI

เกาะยาวน้อยและเกาะยาวใหญ่

It's located in Koh Yao District, Phang - Nga, consisting of a collection of islands surrounded by beautiful nature and an unforgettable atmosphere. With friendly locals, mostly of Islamic faith, offering local activities, ocean exploration, beach adventures, and more.

Opening hours: All year round.

Distance from Veyla Natai:

30 minutes by car to Ao Po pier and 30 minutes by speedboat.

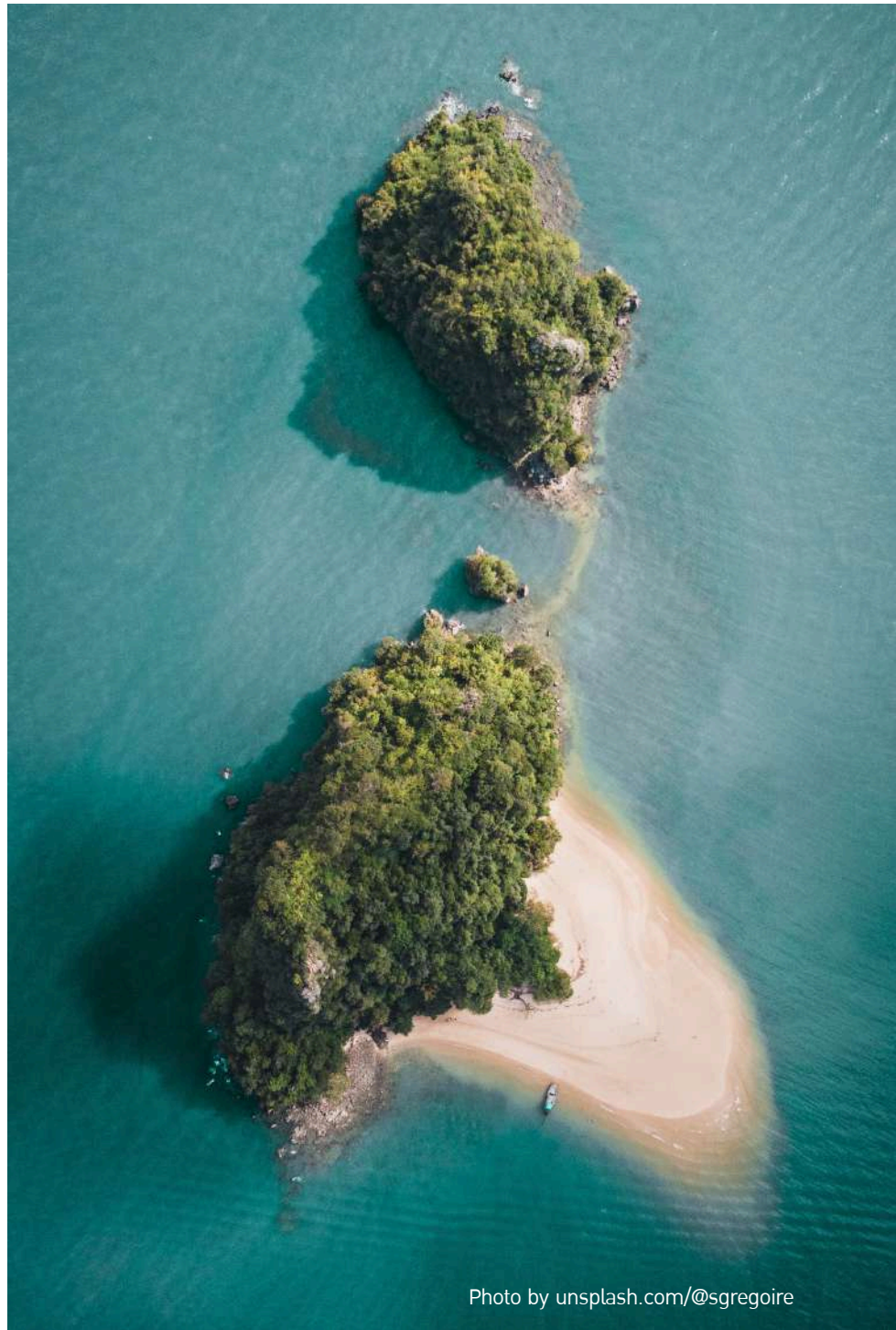


Photo by unsplash.com/@sgregoire



Photo by [ig_jordhammond](https://www.instagram.com/ig_jordhammond)

KOH PAN YEE

เกาะปันหยี

Experience the thrill of climbing and rappelling safely on the limestone cliffs on Koh Pan Yee in Phang Nga Bay. Witness the breathtaking views of Phang Nga Bay and the local Muslim fishing village. Koh Pan-yee is referred to by many as the Floating Village.

Opening hours: 9 am. - 6 pm.

Distance from Veyla Natai:

30 minutes by car to Surakul Pier and 1 hour 30 minutes by long-tail boat.



Photo by facebook.com/thesnapthailand

PAH ISLAND

เกาะผ้า

Pah Island or Koh Pah is a small island located at Mu 4 Tambon Ko Kho Khao, some 10 kilometers off the coast. Its crystal clear sea and abundant coral reefs, as well as white and clean sandy beach make it a serene place suitable for relaxation. The recommended visiting period is from November to April.

Opening hours: 9 am. - 5 pm.

Distance from Veyla Natai: 1 hour 18 minutes by car to Baan Nam Kem Pier and 40 minutes by speedboat.



SIMILAN ISLAND

หมู่เกาะสิมิลัน

The Similan Islands located on the west coast of Southern Thailand consists of eleven islands with Similan as the largest. The Similan Islands national marine park is widely recognized as the number 1 scuba diving area in Thailand, and most would agree that the reef and marine life is some of the best in Asia. The recommended visiting period is from November to April.

Opening hours: 9 am. - 5 pm.

Distance from Veyla Natai: 50 minutes by car to Thap Lamu Pier and 1 hour 30 minutes by speedboat.



SURIN NATIONAL PARK

อุทยานแห่งชาติหมู่เกาะสุรินทร์

The natural reserve consists of 80% water and over five main islands varying in size. The Surin National Park includes two large islands and is a true paradise for many activities such as snorkelling, diving, sunbathing and more. You can either take day trips or stay overnight in the marine park. Surin National Park is a must-visit and is highly recommended!

Opening hours: Closing period between 16 May - 15 October annually.

Distance from Veyla Natai: 2 hours 24 minutes by car to Kura Buri and 3 hours by speedboat.

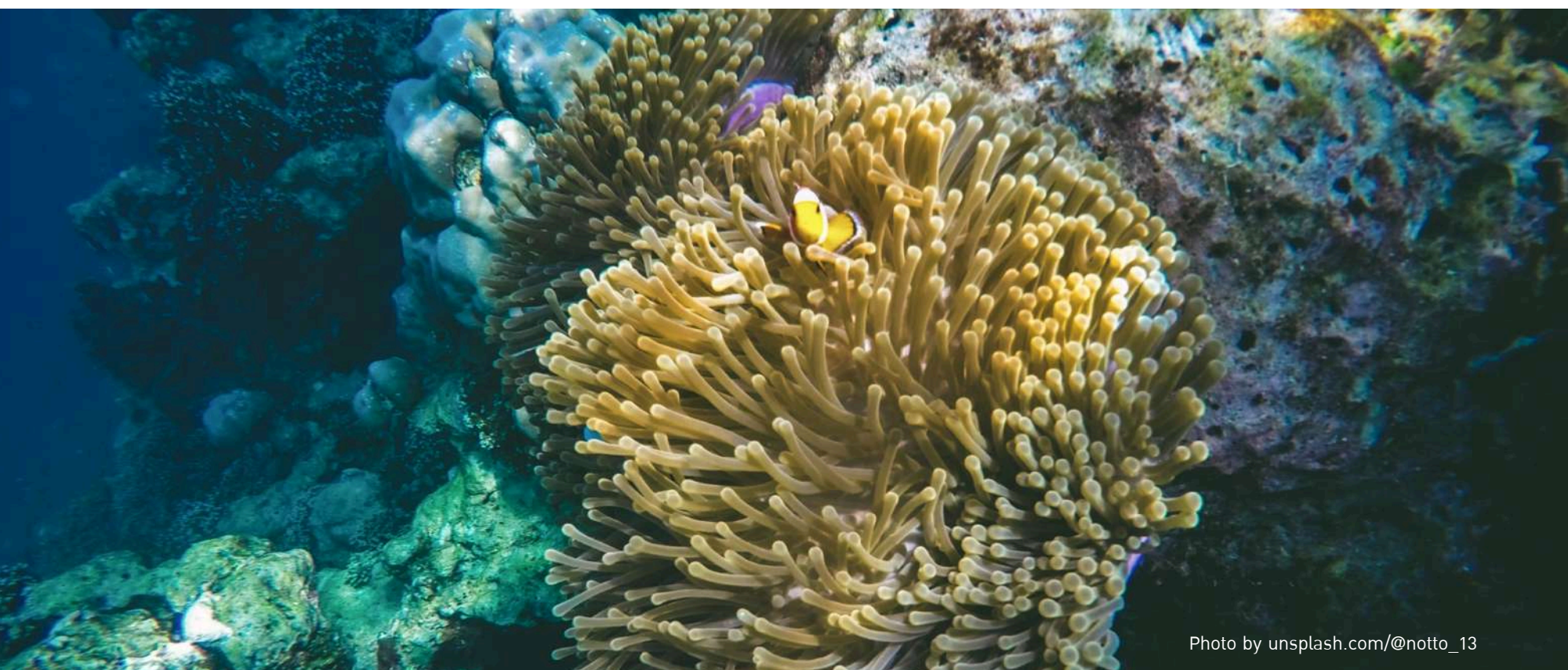


Photo by unsplash.com/@notto_13

SPORT & LEISURE



PHUKET YACHT HAVEN

ยอร์ช เฮเวน มารีน่า ภูเก็ต

The Yacht Haven's location presents beauty and peace. Nestled in the tranquil waters of Cape Phrao, about 30 minutes north of Phuket town, Yacht Haven is sheltered from seasonal storms and rough seas all year round. The marina is just a short drive from the Phuket International Airport, making it easily accessible to boat owners who travel frequently. It is also close to world class golf courses and excellent hotels.

Opening hours: 8.30 am. - 5.30 pm.

Distance from Veyla Natai: 32 minutes by car.



CAPE YAMU PIER

ท่าเรือยามู

Quiet, convenient to go to the boat to travel to various islands, Panyee Island, Long Island, Phi Phi Island.

Opening hours: 9 am. - 5 pm.

Distance from Veyla Natai:
45 minutes by car.



AO PO GRAND MARINA

อ่าวโป แกรนด์ มารีน่า

Ao Po Grand Marina is a 24-hour access marina with zero low or high tide restrictions. Accommodating superyachts over 100 meters, paired with 300 berths and on-site yacht shops and services. The Ao Po Grand Marina is also home to various restaurants, eateries and bars as well as a pool and fitness center.

Opening hours: 8 am. - 5 pm.

Distance from Veyla Natai: 47 minutes by car.



THAP LAMU PIER

ท่าเรือทับละมุ

Thap Lamu pier is the main pier for boats going to the Similan Islands. It is not the only pier near Khao Lak but it is the one that most liveaboard and snorkeling speedboats to the Similan Islands depart from. Thap Lamu is in the Thai Mueang district of Phang Nga province. The location is about 15 minutes drive south of Khao Lak, about 70 minutes drive north of Phuket airport, about 2 hours drive north of Patong beach. From Krabi it's 3-4 hours drive.

Opening hours: 8 am. - 5 pm.

Distance from Veyla Natai:
45 minutes by car.



AQUELLA GOLF & COUNTRY CLUB

อะเควลล่า กอล์ฟ แอนด์ คันทรี คลับ

Aquilla's par-72, 18-hole, 7,000-yard golf course has the majestic panorama of the Andaman sea as its backdrop.

Opening hours: 9 am. - 5 pm. Sat, Sun closed.

Distance from Veyla Natai: 23 minutes by car.



BLUE CANYON COUNTRY CLUB

บลู แคนยอน คันทรี คลับ

Blue Canyon Country Club has been rated as one of the most prestigious golf clubs in Asia, with two stunning, award-winning championship courses on its 700+ acres of succulent valley seamlessly winding its way through rubber plantations and tin mines.

Opening hours: 6.15 am. - 3 pm.

Distance from Veyla Natai: 32 minutes by car.



MEMORY BEACH BAR

ເມມໂມຣີ ບີຊ ບາຣ໌

Just about an hour away at Memory Beach Bar, rent a surf-board or take a surfing lesson and enjoy the day on the beach. A popular spot among local surfers, divers, tourist and more, this beach has it all: an unforgettable beach bar, ocean view restaurant and even a fire show at night.

Opening hours: 10 am. - 9.30 pm.

Distance from Veyla Natai: 1 hour by car.



NAMTOK TON PARIWAT WHITE-WATER RAFTING

ລ່ອງແກ່ງນ້ຳຕກໂຕນປຣິວຣຣຕ໌

Another exciting and adventurous activity along large and small rapids of strong and rushing currents through verdant forests.

Opening hours: available throughout the year.

Distance from Veyla Natai: 1 hour 17 minutes by car.

RESTAURANT & CAFE



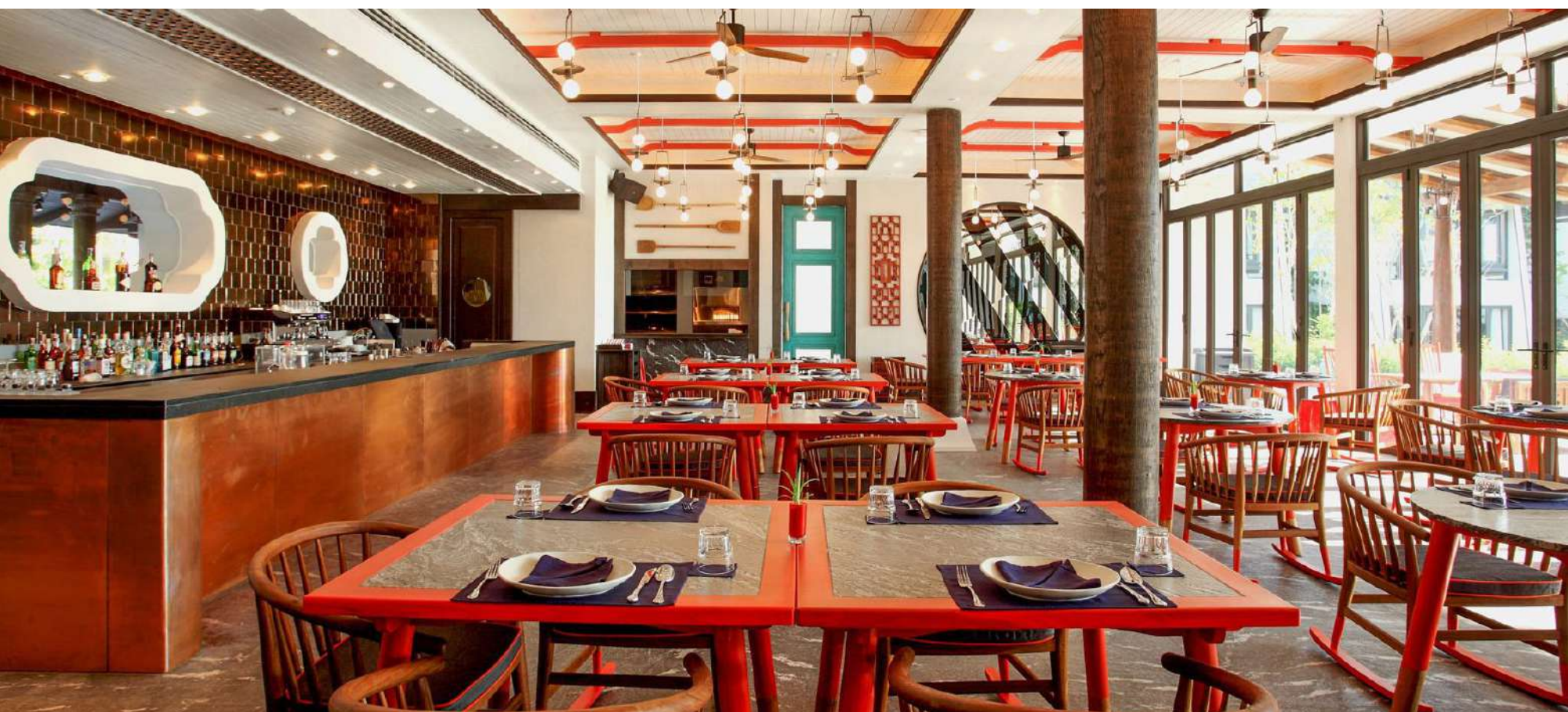
BABA BEACH CLUB

บาบา บีช คลับ

Spend a day at Baba Beach Club Natai for the ultimate luxury beach club experience. Just steps away from Natai Beach.

Opening hours: 11 am. - 11 pm.

Distance from Veyla Natai: 5 minutes by walking.





KHOK KLOI TOMYUM NOODLE

โคกกลอยบะหมี่ ต้มยำใส่ไข่

Michelin Star local restaurant. This place has been serving delicious homemade Tom Yam noodles for years. Known for its meat and intense broth, the shop's noodles come dry or in soup with a choice of noodles; adding a soft-boiled egg is highly recommended.

Opening hours: 7.30 am. - 4 pm.
Tuesday closed.

Distance from Veyla Natai:
9 minutes by car.



THIAN LENG BAK KUT TEH

เทียนเล้ง บะกุ๊ดเต้

Using a secret recipe from Kedah, Malaysia, this outlet specialises in slow-cooked bak kut teh, or pork rib soup. The fragrant herbal soup is served boiling in a clay bowl filled with tender ribs; the meat falls easily off the bone. It's guaranteed to be delicious or you'll get your money back.

Opening hours: 7 am. - 5 pm.

Distance from Veyla Natai: 10 minutes by car.



FASHI BY KRUA KLANG DONG

ฟาซี โดย ครัวกลางดง

Restaurant with beautiful ambience. The food is superb in taste, variety, and portion. They serve both southern food and some western dishes with live music.

Opening hours: 11 am. - 11 pm.

Distance from Veyla Natai: 11 minutes by car.



TA TUAY

တာတုယ

Located near Sarasin Bridge that links Phuket to the mainland. On the menu, seafood is heavily featured, such as crab, fish, cockles, squid, prawns and sand worms, all very fresh and perfectly cooked. Michelin Star local restaurant 2020.

Opening hours: 11.30 am. - 9 pm.

Distance from Veyla Natai: 15 minutes by car.



KRUA KLANG DONG

ครัวกลางดง

With simple rustic exterior, the restaurant is located in modest town of Khok Kloi which is simply 10 kilometers northward of the bridges connecting Phuket to Phang Nga province. The menu contains a variety of dishes, including many local southern Thai specialties.

Opening hours: 10 am. - 9 pm.

Distance from Veyla Natai: 20 minutes by car.

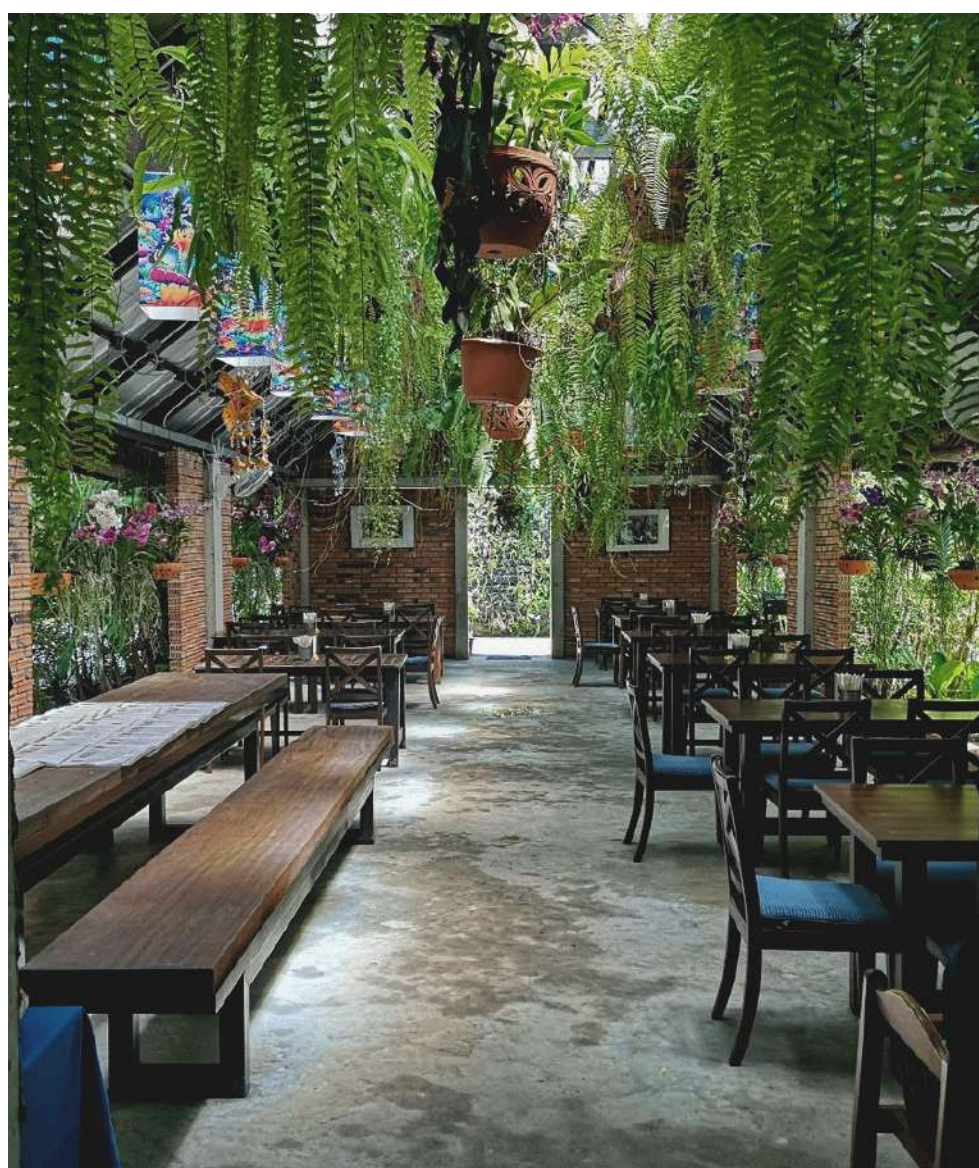
KIN DEE RESTAURANT

ร้านอาหารกินดี

KIN DEE is a small restaurant in Mai Khao, Phuket, not far from Phuket International Airport and has become the restaurant that you first introduce to your Phuket visitors. KIN DEE is known for their local Thai cuisine paired with a few international dishes.

Opening hours: 10.30 am. - 10 pm.

Distance from Veyla Natai:
20 minutes by car.





BAAN AR-JOR

บ้านอาจ้อ

Romantic 85 yrs-old-historical-living-home-museum, irresistible 100-yrs-family-secret-recipe cafe & restaurant plus exotic-homestay that bring you journey back to the most memorable moments of 1936 in PHUKET. Michelin Guide Authentic and Uncompromising Phuket Food.

Opening hours: 10 am. - 10 pm.

Distance from Veyla Natai:
21 minutes by car.



SAMET NANG CHEE BOUTIQUE

ร้านอาหารเสม็ดนางชี

Known for their unforgettable Southern Thai food menu, restaurant and bar resort showcases a range of strong flavors and spices, Samet Nang Chee Boutique combines traditional basket work and modern interior in their indoor and outdoor dining areas.

Opening hours: 6 am. - 9 pm.

Distance from Veyla Natai: 35 minutes by car.



KHRUA LUANG THEN

ครัวหลวงเทน

Michelin Star local restaurant. Located on the way to Khao Lak, Khrua Luang Then is definitely worth a stop, thanks to its authentic Southern cuisine which uses good quality ingredients.

Opening hours: 11 am.- 1 pm. and 5 - 8 pm. (2 rounds a day).

Distance from Veyla Natai:

1 hour 5 minutes by car.



TONE

ร้านกาแฟโทน

TONE coffee house offers various specialty coffees and sell an exclusive selection of coffee beans. Sitting just underneath a big mango tree, this is the perfect place for a quick escape.

Opening hours: 9 am. - 4 pm.

Distance from Veyla Natai: 13 minutes by car.



MADE IN BLUE CAFE & BISTRO

แมด อิน บลู คาเฟ่ แอนด์ บิสโตร

For senior coffee lovers, Made In Blue Cafe & Bistro specializes in a selection of different roasted coffee beans. With a cozy design and both indoor and outdoor seating areas, enjoy a cup of coffee and relax under their big tropical trees for a moment.

Opening hours: 7.30 am. - 5.30 pm.

Distance from Veyla Natai: 16 minutes by car.



ZIGMA ESPRESSO

ซิกม่า เอสเพรสโซ่

Specialty Coffee Shop with many menus; speed bar and slow bar for coffee lovers. The minimalist cafe that you will love it.

Opening hours: 9.00 am. - 5.30 pm.

Distance from Veyla Natai:

15 minutes by car.



CAFE JEN

คาเฟ่ เจน

CAFE JEN is a casual all-day eatery with ocean views, comfort food and specialty coffee. Bask in the sun over lunch or dinner with the sound of the waves softly rolling in the background.

Opening hours: 8 am. - 7 pm.

Distance from Veyla Natai: 27 minutes by car.



MANEE COFFEE SINCE 1960

มานี คอฟฟี่ ซินส์ 1960

A historic and legendary coffee shop first established in the 1960s, Manee Coffee is located inside the Ka Lai Market. They have some of the best roasted coffee varieties as well as various cakes and classic beverages. Revel in the surrounding garden with views of the nearby mountain valley and canals.

Opening hours: 9 am. - 5 pm.

Distance from Veyla Natai: 32 minutes by car.

CULTURE & LOCAL LIFE



WAT THA SAI TEMPLE

วัดท่าไทร (วัดเทศก์ธรรมนาวา)

Testhammanawa Temple or Wat Tha Sai situates peacefully among pine forest and Bo Dan beach, Phang Nga. The temple is very unique with its highlights: the teak wood chapel impeccably built in Thai style, the exquisite art of indoor wood carving and the delicate white jade Buddha statue influenced by Indian art.

Opening hours: 5 am. - 8 pm.

Distance from Veyla Natai:

23 minutes by car.



SUWANNAKUHA TEMPLE

วัดสุวรรณคูหา

Suwannakuha Temple is an important historical site in Phang Nga. The temple consists of a series of large connecting caves. The highlight is the 15-meter long golden reclining Buddha statue. Apart from the statue, there are Thai Benjarong porcelains, antiquities and other smaller Buddha sculptures waiting to be discovered.

Opening hours: 8.30 am. - 5 pm.

Distance from Veyla Natai: 30 minutes by car.



SAM CHONG TAI VILLAGE

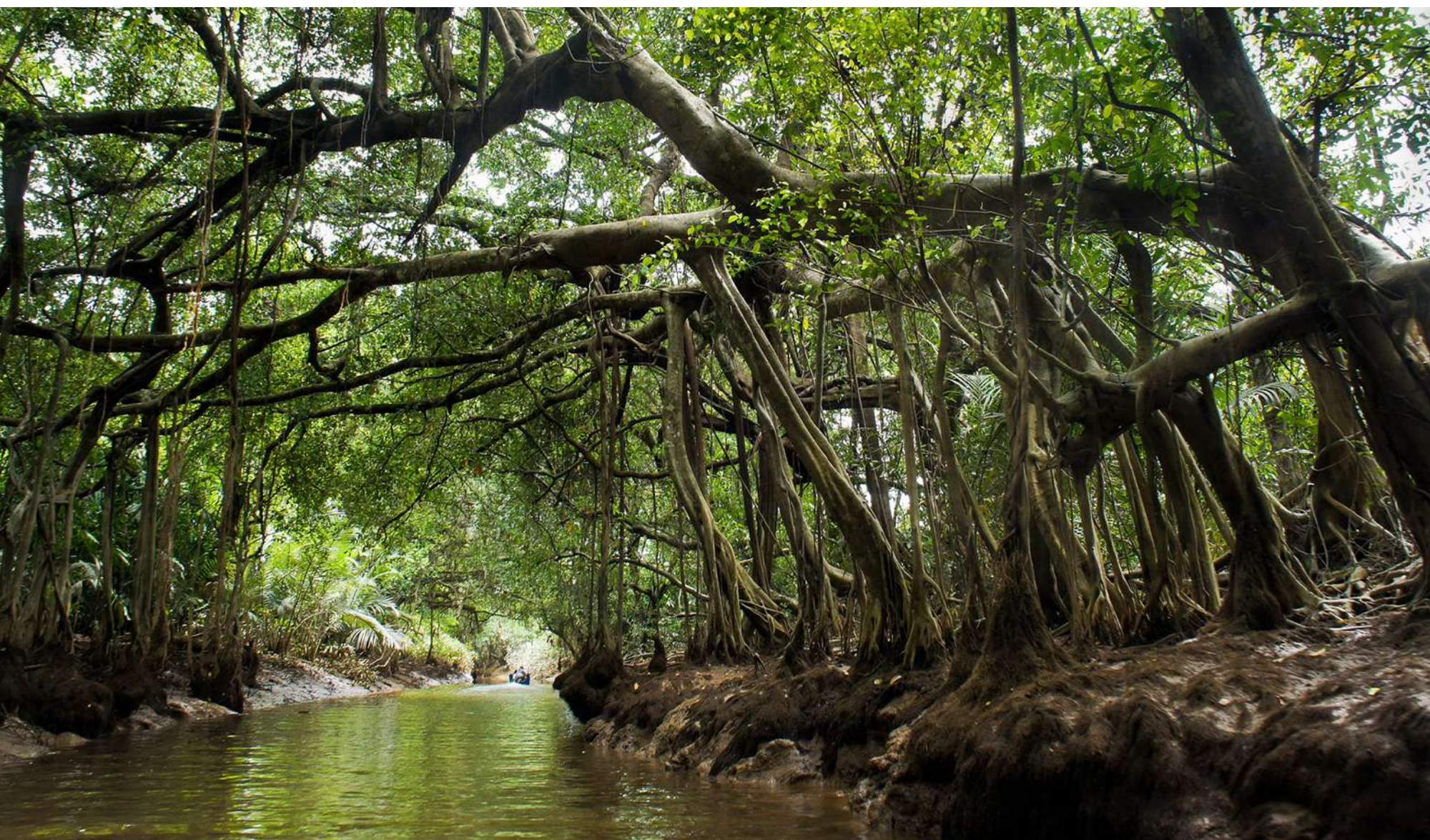
บ้านสามช่องใต้

This small village is solely built on wooden stilts and connecting footbridges that are almost floating above the water. The majority of the villagers are fishermen using traditional fishing traps which has historically defined and enriched their community for generations.

Opening hours: 8.30 am. - 5 pm.

Distance from Veyla Natai:

40 minutes by car.



LITTLE AMAZON

คลองสัจเนห์

Don't miss your chance to experience Little Amazon and the natural beauty that Thailand has to offer. The exotic jungle is home to ancient banyan trees, one-of-a-kind wildlife and a stunning river. Perfect for a day excursion in nature that you are soon to never forget.

Opening hours: 5 am. - 8 pm.

Distance from Veyla Natai: 1 hour by car.



PLAI-POO HOT SPRING

บ่อน้ำพุร้อนปลายพู่

Plai-Poo Hot Springs are about 100 years old and situated in the district of Kapong close to Phu Ta Jor, one of the highest peaks in Phang-Nga province at nearly 1,400 meters. Plai Poo Hot Spring's mainstream is the mixture of hot spring and regular-stream, creating a perfect, humanly-comforting warm water to soak into the natural minerals.

Opening hours: 8 am. - 7 pm.

Distance from Veyla Natai:

1 hour 22 minutes by car.



TAKUAPA OLD TOWN & WALKING STREET

ย่านเมืองเก่าตะกั่วป่า และถนนคนเดิน

Takuapa Old Town is rich in culture and full of the charm of past memories. Passing by the area, you can see the perennial Sino-Portuguese buildings and the daily lifestyles of the locals which are entirely different from those in big cities. On Sundays, the walking street market in Takuapa Old Town is opened.

Opening hours: November- April. Only 5 - 8 pm. on Sundays (Walking Street).

Distance from Veyla Natai: 1 hour 30 minutes by car.

MARKET & SHOPPING



FISH MARKET NAI RAI

ตลาดขายปลา ยามเช้าที่ท่าเรือ
หมู่บ้านในไร่

One of the most memorable foodie destinations nearby Veyla Natai Residences is the Nai Rai Fish Market. Meet the local fishermen selling their daily catch and discover the traditional fishing traps and their historic customs. If you feel like going fishing, take the opportunity to join one of the various fishing tour services available there.

Opening hours: 5 am. - 1 am.

Distance from Veyla Natai:
3 minutes by car.



TURTLE VILLAGE SHOPS & CUISINE

เทอร์เทิล วิลเลจ ชอป แอนด์ คิวซีน

Turtle Village Shopping complex offers a wide range of shops and vendors such as supermarkets, small cafes and clothing stores that cater to everything you need.

Opening hours: 8 am. - 9 pm.

Distance from Veyla Natai: 20 minutes by car.



PAK TAK WALKING STREET

ถนนคนเดินบ้านปากดัก

A 50 meters long, colorful, and lively walking street gives you a glimpse of daily life in southern Thailand and a chance to find local products. Houses along the street still exhibit the uniqueness of traditional construction. In terms of product selling at the market are made by locals, traditional food, dessert, and drinks are easily found at an affordable price.

Opening hours: Sunday 3 pm. - 8 pm.

Distance from Veyla Natai: 1 hour by car.



KAPONG MORNING MARKET

ตลาดเช้ากลางหมอกเมืองกะปง

A well-known market among locals of its beauty on a foggy morning and various local vendors' products. The market has a wide range of fresh products - fruit, vegetable, meat, and fish - and a section dedicated to clothing, souvenirs, toys, massage oils, to religious artifacts. As with most Thai markets, it's also a great place to sample local snacks at affordable prices.

Opening hours: Sunday 5 am. - 9 am.

Distance from Veyla Natai: 1 hour by car.

USEFUL CONTACT INFORMATION

Phang-nga Immigration	Tel. 0 7646 0512,1178
Phuket Tourist Police	Tel. 0 7622 3891,1155
Muang Phangnga Police Station	Tel. 0 7641 2073
Takua pa Police Station	Tel. 0 7642 1113
Thai Mueang Police Station	Tel. 0 7657 1799
Phang-nga Hospital	Tel. 0 7641 1618-9
Takua pa Hospital	Tel. 0 7658 4250
Thai Mueang Hospital	Tel. 0 7657 1505-6
Emergency Call	Tel. 191
Phang-nga Public Relation Office	Tel. 0 7641 1388
Highway Police	Tel. 1193
TAT Tourist Hotline	Tel. 1672
Phang-nga Meteorological Department	Tel. 1182, 0 7648 6494
Telephone Number Inquiry	Tel. 1133
Post Office	Tel. 0 7641 2171-2
Phuket International Airport	Tel. 0 7635 1111
Krabi International Airport	Tel. 0 7563 6541-2

